

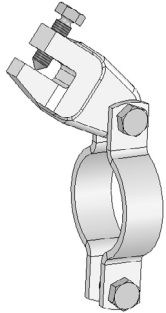


SEISMIC SWAY BRACING FOR FIRE PROTECTION



NOW FM APPROVED

CLAMPING PIPE ATTACHMENT



Model 031

Universal swivel design allows for attachment at any angle and the ability to be used in a lateral or longitudinal bracing configuration.

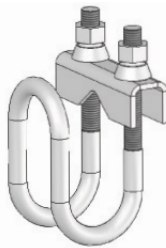
Pipe size: 2" thru 8"

Can use 1" thru 2" SCH 40 pipe, structural steel, and 12 gauge strut as sway bracing elements.

CROSS REF:
Erico: CSBSTU
Tolco: 4L

Pipe Size	1" Brace Size	PRICE
2"	2550643	\$18.34
2-1/2"	2550644	\$18.60
3"	2550645	\$19.06
3-1/2"	2550646	\$19.86
4"	2550647	\$19.86
5"	2550648	\$19.45
6"	2550649	\$23.36
8"	2550650	\$36.30

"FAST CLAMP" SWAY BRACE PIPE ATTACHMENT



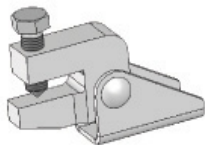
Model 010

The pipe attachment component of a swaybrace system used in conjunction with a structural attachment fitting and joined together with a bracing pipe element forming a complete sway brace assembly.

CROSS REF:
Erico: CSBQIK
Afccon: Model E
Tolco: 1000

Pipe Size	1" Brace Size	PRICE
1"	2550600	\$6.42
1-1/4"	2550601	\$6.24
1-1/2"	2550602	\$6.24
2"	2550603	\$6.76
2-1/2"	2550604	\$6.96
3"	2550605	\$7.05
4"	2550606	\$8.35

Pipe Size	1-1/4" Brace Size	PRICE
1"	2550607	\$6.73
1-1/4"	2550608	\$6.78
1-1/2"	2550609	\$6.78
2"	2550610	\$6.78
2-1/2"	2550611	\$7.00
3"	2550612	\$7.03
4"	2550613	\$10.26
6"	2550614	\$13.68



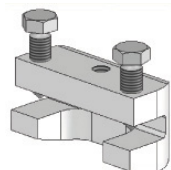
C-CLAMP STRUCTURAL ATTACHMENT

Model 030

Universal swivel design allows for attachment at any surface angle combined with concentric loading. Designed to use 1" through 2" bracing pipe and structural steel as sway bracing element.

CROSS REF:
Erico: CSBUNIV
Afccon: 076
Tolco: 980

Item #	Member Thickness	Max.Rec. Load	PRICE
2550630	Sch 40	2015	\$8.72



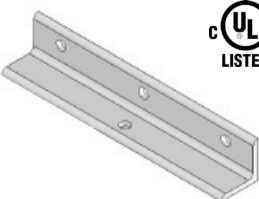
SWAY BRACE BAR JOIST ADAPTER

Model 035

Used to attach a sway brace assembly to a steel bar joist structural member of 3/8" maximum thickness.

CROSS REF:
Erico: CSBBAR
Afccon: 087
Tolco: 825

Item #	Max Pipe Size	Max.Rec. Load	PRICE
2550635	8"	2015	\$14.30



MULTI-FASTENER ADAPTER

Model 025

Used to develop greater load carrying ability by providing multiple fastener attachment points. Adapter allows for 2 or 3 fasteners to provide NFPA-13 support for hangers or swaybrace assemblies.

CROSS REF:
Erico: CSBMA
Afccon: 080
Tolco: 906

Item #	Fastener Size	Max.Rec. Load	PRICE
2550620	1/2"	2015	\$8.50
2550621	3/4"	2015	\$8.50