

data sheet

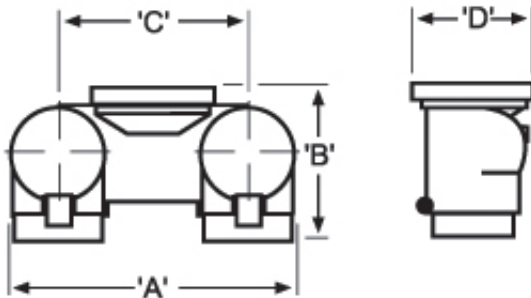


FLUSH STRAIGHT PATTERN INLET CONNECTIONS

Flush mount double clapper fire department connection.

Double clapper design ensures water supply from supplementary source from either one or two servicing hoses. Inlet Connection allows in excess of 500 G.P.M. supplementary water supply for fire protection system.

- 6510260:** 2 way straight pattern body 4" grooved outlet x 2-1/2" (F) NST
- 6510260C:** 2 way straight pattern body 4" grooved outlet x 2-1/2" (F) NST complete (includes snoots, plugs, wallplate: "AUTO SPRINKLER")



4" x 2-1/2" x 2-1/2"

A	10-1/2" (265.7 mm)
B	7-3/8" (187.3 mm)
C	7" (177.8 mm)
D	5-1/8" (130.2 mm)

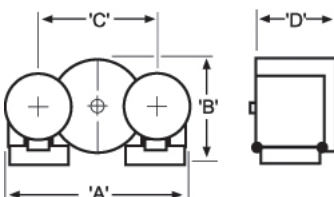
FLUSH 90° PATTERN INLET CONNECTIONS

Flush mount double clapper fire department connection.

Double clapper design ensures water supply from supplementary source from either one or two servicing hoses. Inlet Connection allows in excess of 500 G.P.M. supplementary water supply for fire protection system.

Angle body and field adjustable clappers allow for a top or bottom inlet.

- 6510265:** 2 way 90° pattern body 4" grooved outlet x 2-1/2" (F) NST
- 6510265C:** 2 way 90° pattern body 4" grooved outlet x 2-1/2" (F) NST complete (includes snoots, plugs, wallplate: "AUTO SPRINKLER")



4" x 2-1/2" x 2-1/2"

A	11" (279.4 mm)
B	7-1/8" (181 mm)
C	7" (177.8 mm)
D	5.37" (136.4 mm)

System No.		Location		Spec Section		Paragraph	
Submitted By		Date		Approved		Date	