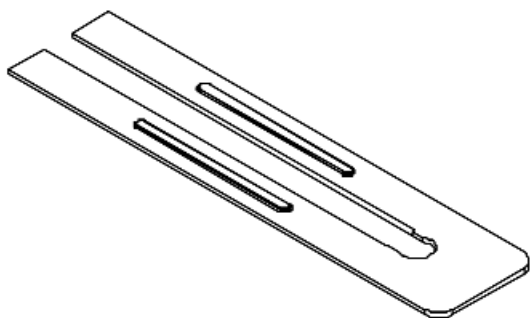
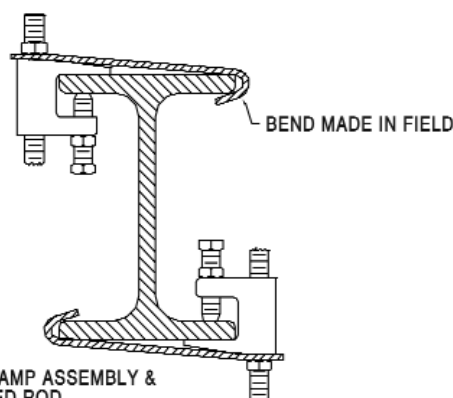


BEAM CLAMP

Slip Lock Retrofit Retaining Strap



- Used when a retaining is required in a pre-existing system.
- Allows installation where hangers already exist.
- For 3/8" rod.
- Zinc Plated Steel



BEAM CLAMP ASSEMBLY &
THREADED ROD
WITH NUT NOT INCLUDED

ITEM #	L	CROSS REFERENCE
		ERICO®
25-50-351-6	6"	034SL0600EG
25-50-351-8	8"	034SL0800EG
25-50-351-10	10"	034SL01000EG
25-50-351-12	12"	034SL01200EG
25-50-351-14	14"	034SL01400EG

The information contained herein is produced in good faith and is believed to be reliable but is for guidance only. ARGCO and its agents cannot assume liability or responsibility for results obtained in the use of its product by persons whose methods are outside or beyond our control. It is the user's responsibility to determine the suitability of any of the products, methods of use, or preparation prior to use, mentioned in our literature. It is the user's responsibility to observe and adapt such precautions as may be advisable for the protection of personnel and property in the handling and use of any of our products.

**FOR MORE INFORMATION CALL ARGCO AT 1-800-854-1015
OR LOG ONTO WWW.ARGCO.COM**