

data sheet

ARGCO



HAND OPERATED HYDROSTATIC TEST PUMP



PT® Hand operated test pump

Pressure testing residential water tanks and solar systems to 200 psi.

Tests hydraulically for leaks in installations which are required to be leak proof.

Especially for use in heating, compressed air, refrigeration systems, oil installations, sprinkler systems and other small bore pipe installations.

Includes valve, gauge and hose.

The information contained herein is produced in good faith and is believed to be reliable but is for guidance only. ARGCO and its agents cannot assume liability or responsibility for results obtained in the use of its product by persons whose methods are outside or beyond our control. It is the user's responsibility to determine the suitability of any of the products, methods of use, or preparation prior to use, mentioned in our literature. It is the user's responsibility to observe and adapt such precautions as may be advisable for the protection of personnel and property in the handling and use of any of our products.

**FOR MORE INFORMATION CALL ARGCO AT 1-800-854-1015
OR LOG ONTO WWW.ARGCO.COM**

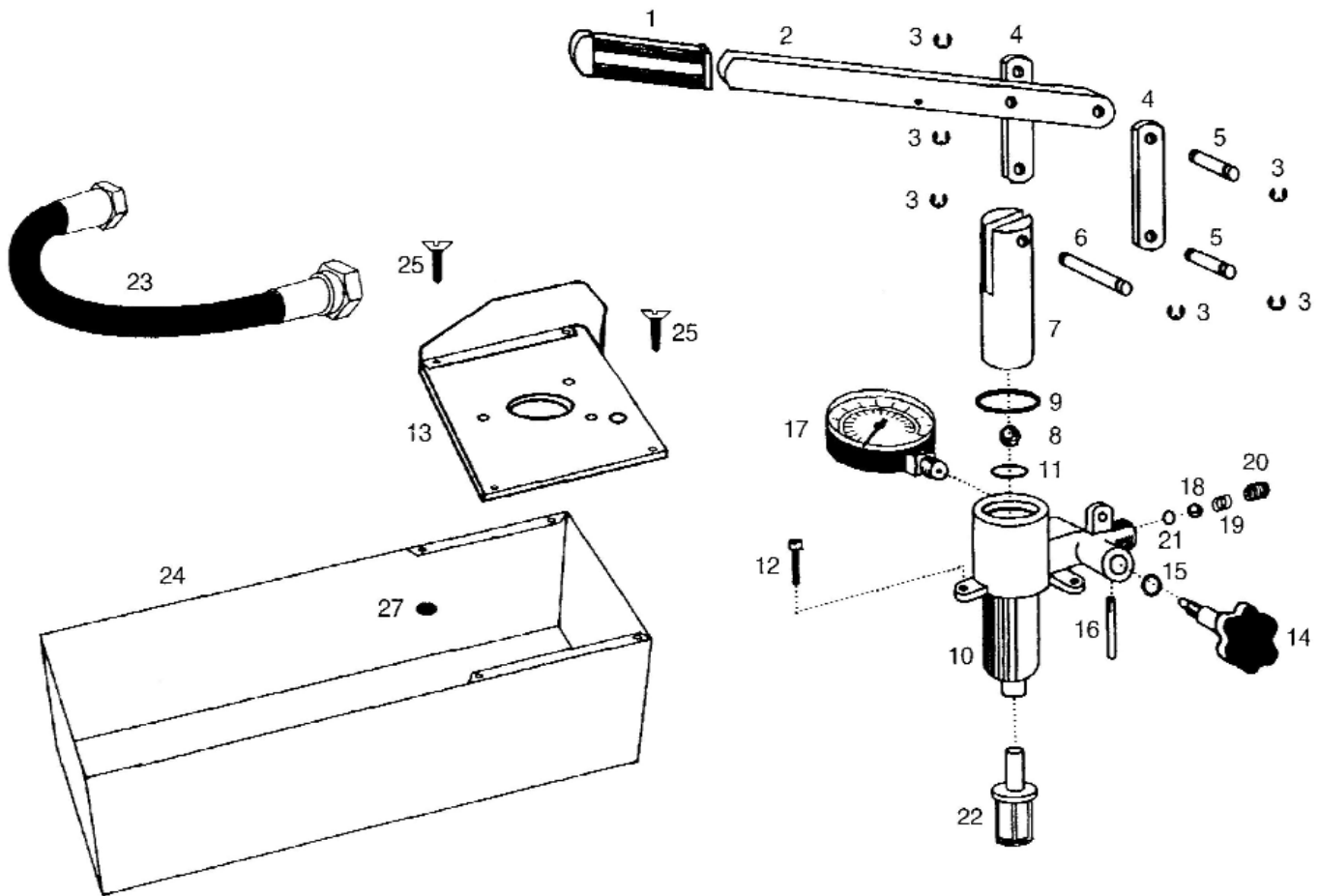
parts breakdown

ARGCO

ph: 800.854.1015
www.pipingtools.com



HAND OPERATED HYDROSTATIC TEST PUMP Part # 30-99-150



PARTS LIST

- | | |
|-----------------------|-----------------------------|
| 1. Handle grip | 14. Return Valve |
| 2. Handle | 15. O-Ring |
| 3. Gasket | 16. Return Line |
| 4. Spindle | 17. Pressure Gauge |
| 5. Pin | 18. Ball (discharge side) |
| 6. Shaft | 19. Spring (discharge side) |
| 7. Piston | 20. Threaded Sleeve |
| 8. Ball (intake side) | 21. O-Ring |
| 9. O-Ring | 22. Intake Filter |
| 10. Pump Body | 23. High Pressure Hose |
| 11. O-Ring | 24. Reservoir |
| 12. Screw | 25. Countersunk Screw |
| 13. Retaining Plate | 27. Hexagon Nut |



GUARANTEED

HAND OPERATED HYDROSTATIC TEST PUMP

OPERATING INSTRUCTIONS:

1. Install supplied washers to pressure hose (23) and connect hose to pressure outlet threaded sleeve (20)
Connect other end to system to be tested.
2. Fill reservoir with clean water.
3. Pump the piston with the handle until pressure gauge indicates the required pressure - and begin testing.
If gauge exceeds wanted pressure, adjust the release valve to the normal position.
4. Once testing is complete, wait until all pressure is relieved, then disconnect pump from the system.

Note: Do not pump flammable or explosive fluids such as gasoline, fuel oil, kerosene, etc.
Do not use in explosive atmospheres.
Use only pipe, hose and fittings rated for the maximum PSI rating of the pump.

Check hose for weak or worn condition before each use. Make certain that all connections are tight and secure.

Before servicing, ensure all pressure in system is relieved. Drain all liquids from the system and flush.

The information contained herein is produced in good faith and is believed to be reliable but is for guidance only. ARGCO and its agents cannot assume liability or responsibility for results obtained in the use of its product by persons whose methods are outside or beyond our control. It is the user's responsibility to determine the suitability of any of the products, methods of use, or preparation prior to use, mentioned in our literature. It is the user's responsibility to observe and adapt such precautions as may be advisable for the protection of personnel and property in the handling and use of any of our products.

**FOR MORE INFORMATION CALL ARGCO AT 1-800-854-1015
OR LOG ONTO WWW.ARGCO.COM**