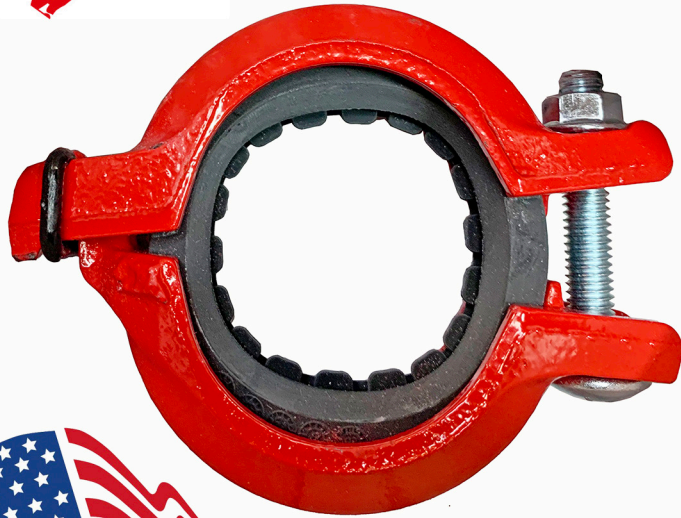


GROOVED COUPLINGS - ONE-BOLT PUSH-ON STANDARD RIGID Style 001RT



NEW



Patented One-Bolt Push-On Design
No Need to Disassemble
Install in less than half the time of standard couplings
Non-Continuous Rubber Center Stop Gasket

Available Sizes

- 1-1/4" through 4"

Pipe Material

- Carbon steel, Schedule 7 , Schedule 10, Schedule 40.

Maximum Working Pressure

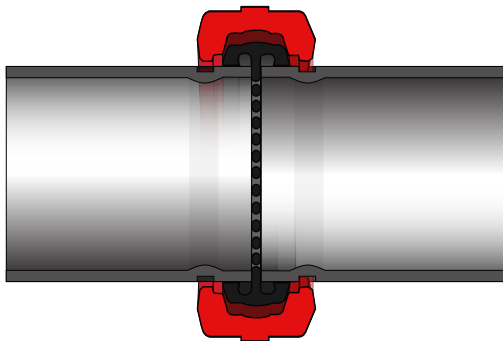
- Up to 300 psi

Function

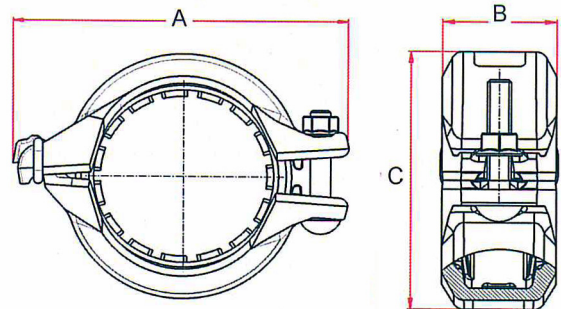
- Joins carbon steel pipe.
- Provides a rigid pipe joint designed to restrict axial or angular movement.

CERTIFICATIONS/LISTINGS

Underwriters Laboratories, Underwriters Laboratories Canada, Factory, Mutual,



Non-Continuous Rubber Center Stop Gasket



DIMENSIONS

DIMENSIONS								MAX END LOAD (LBS)	ALLOWED PIPE END SEPARATION (INCHES)
					BOLTS				
ITEM #	SIZE	A	B	C	NO.	SIZE X LENGTH			
7014002	1-1/4"	4.41"	1.77"	2.72"	1	3/8"	2-3/8"	663	0.12-02.20
7014003	1-1/2"	4.57"	1.77"	3.39"	1	3/8"	2-3/8"	868	0.12-02.20
7014004	2"	5.08"	1.77"	3.94"	1	3/8"	2-3/8"	1347	0.12-02.20
7014005	2-1/2"	5.71"	1.85"	4.09"	1	3/8"	2-3/8"	1983	0.12-02.20
7014006	3"	6.54"	1.89"	4.57"	1	3/8"	2-3/8"	2941	0.12-02.20
7014007	4"	7.87"	1.97"	5.87"	1	3/8"	2-3/4"	4739	0.12-02.20

INSTALLATION INSTRUCTIONS

DO NOT DISASSEMBLE THE 001RT COUPLING

Style 001RT couplings are installation ready

1. Check the pipe ends.
The groove must be uniform depth and its dimensions conform to Quikcoup specifications.
Both pipe ends should be free of indentations, rust or roll marks from the end of the pipe to the groove.

2. Assemble the joint by inserting the grooved ends of the pipes or mating components into each side of the coupling.

The ends of the grooved pipes or mating components must be inserted in the coupling until contact with the center leg of the gasket occurs.

3. A visual check is required to ensure the coupling keys align with the grooves in the pipes/mating components.

NOTE: The coupling may be rotated to ensure gasket is seated properly.

- Tighten the nut by bringing coupling halves together (metal to metal), then apply specified torque, to ensure proper contact between the coupling halves. BOLT TORQUE 3/8"/M10: 73-81 ft lb / 100-110 N-m
- IMPORTANT: Make sure the housing keys completely engage the grooves of the pipes or mating components.

