

## Fire Hose Rack Nipple

### 2 1/2" NPT x NST Brass Rack Nipple

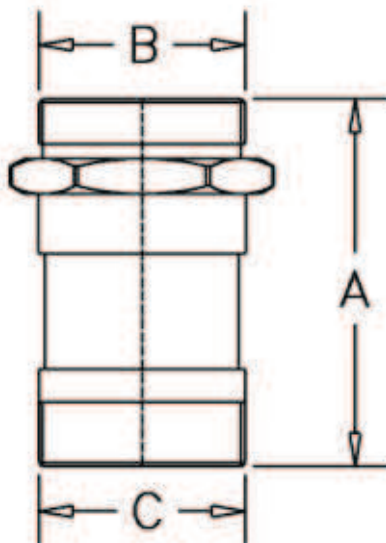


2 1/2" male NPT x 2 1/2" male NST hose thread rack nipple. Same size both ends.

**Finish** : Polished Brass

**Optional Finish** : Polished Chrome

#### Dimensions:



A= 4.16" (106mm)

B= Regional Hose Thread

C= NPT Thread