

ROD SWIVEL ATTACHMENT

FIG. 020



FUNCTION: May be used as a branchline restraint for structural attachment.
May be used in a pitched or sloped roof application, to meet requirements of NFPA 13,
or may be used as an upper attachment with short hanger rod to omit seismic bracing.

SIZE: 3/8"

MATERIAL: Electro-galvanized Low Carbon Steel



INSTALLATION: Insert a #2 screwdriver through the tapped hole to access the head of attachment fastener. Tighten attachment fastener to desired attachment point, then remove screwdriver and thread 3/8-16 threaded rod into Swivel Attachment

APPROVALS: Underwriters' Laboratories Listed in the U.S. (UL) and Canada (CUL)

ARGCO Item Number: [2550622](#)

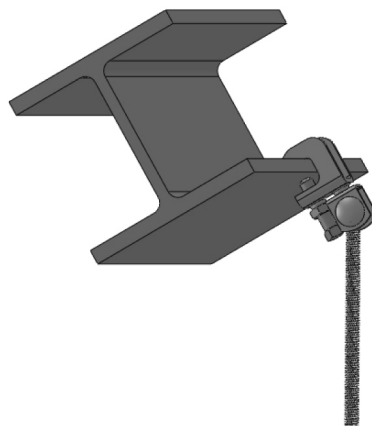
Cross Reference: PHD Model 622, Tolco Fig 75

Recommended Items: Steel Beam Clamp [2550050STL](#)

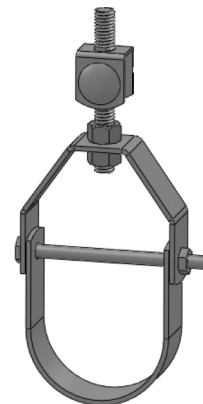
Rod Size	Max Pipe Size	Max Load Size	Weight each
3/8"	4"	730 lbs	.10 lbs



BRANCH LINE RESTRAINT
NFPA13 2010
Section A.9.3.6.1(5)



PITCHED ROOF APPLICATION
NFPA13 2010
Section 9.1.2.6



Upper attachment with a
short hanger rod to omit
seismic bracing

System No.		Location		Spec Section		Paragraph	
Submitted By		Date		Approved		Date	