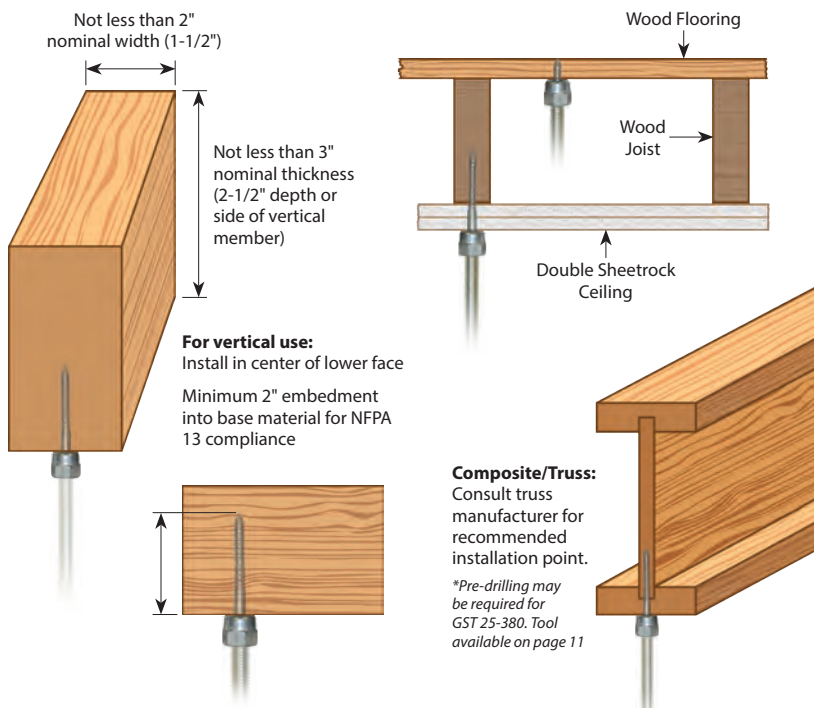




SAMMYS FOR WOOD – Vertical Application



PRODUCT FEATURES

- No pre-drilling required
- Quick to install using the Sammy Nut Driver with an 18V cordless drill
- Saves time from traditional methods
- Reduces installation costs
- Assembled in the U.S.A.



View our installation videos:
www.sammysanchors.com/install

VERTICAL MOUNT

Approvals	Rod Size	Part Number	Model	Screw Description	Ultimate Pullout (lbs)	UL Test Load (lbs)	FM Test Load (lbs)	Box Qty	Case Qty	Nut Driver
	1/4"	8002957	GST 100	1/4 x 1"	210 (7/16" OSB) 760 (3/4" Ply)			25	125	#14 Black Part # 8113910
	1/4"	8003957	GST 200	1/4 x 2"	1760 (Fir)			25	125	#14 Black Part # 8113910
	3/8"	8007957	GST 10	1/4 x 1"	210 (7/16" OSB) 760 (3/4" Ply)	300		25	125	#14 Black Part # 8113910
	3/8"	8008957	GST 20	1/4 x 2"	1760 (Fir)	850	1475	25	125	#14 Black Part # 8113910
	3/8"	8068925	GST 20-SS*	1/4 x 2"	1760 (Fir)	850		25	125	#14 Black Part # 8113910
	3/8"	8009925	GST 25-380	3/8 x 2-1/2"	2113 (Fir)	1500		25	125	#14 Black Part # 8113910
	3/8"	8010957	GST 30	1/4 x 3"	2060 (Fir)	1500	1475	25	125	#14 Black Part # 8113910
	1/2"	8013925	GST 2	1/4 x 2"	1760 (Fir)			25	125	#14 SW Red Part # 8114910
	1/2"	8015925	GST 3	1/4 x 3"	2275 (Fir)			25	125	#14 SW Red Part # 8114910

* GST-20-SS is Stainless Steel

SAMMYS NUT DRIVERS



#14 Black Nut Driver
Part # 8113910



#14 SW Red Nut Driver
Part # 8114910



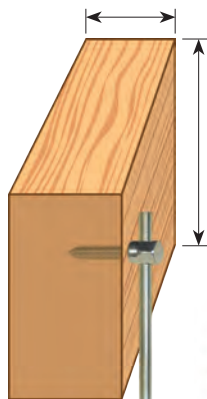
#14 SH Orange Nut Driver
Part # 8273910

SPECIAL NUT DRIVER SYSTEM: The nut drivers were designed with a unique spin-off feature which provides a fast and safe installation each time. When the face of the driver comes into contact with the material you are installing into, continue drilling until nut driver spins free. Installation is then complete. Warranty requires the use of the appropriate nut driver for installations.

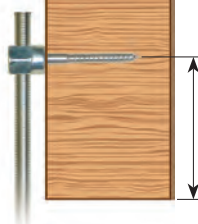


SIDEWINDER® FOR WOOD – Horizontal Application

Not less than 2" nominal width (1-1/2") up to 3-1/2" pipe; not less than 3" nominal width (2-1/2") 4" & 5" pipe

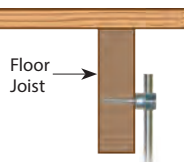


Minimum 2-1/2" from bottom for branch lines. Minimum 3" from bottom for main lines. Exception: This requirement shall not apply to 2" or thicker nailing strips resting on top of steel beams.

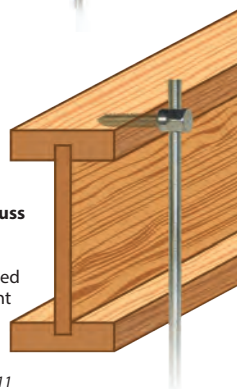


Composite / Truss
Consult truss manufacturer for recommended installation point

*Pre-drilling may be required for SWG 25-380. Tool available on page 11



Floor Joist



PRODUCT FEATURES

- No pre-drilling required
- Quick to install using the Sammy Nut Driver with an 18V cordless drill
- Saves time from traditional methods
- Reduces installation costs
- Assembled in the U.S.A.



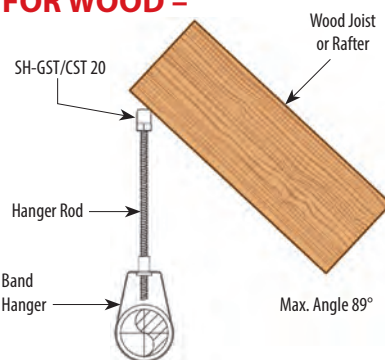
View our installation videos:
www.sammysanchors.com/install



HORIZONTAL MOUNT

Approvals	Rod Size	Part Number	Model	Screw Description	Ultimate Shear (lbs)	UL Test Load (lbs)	Box Qty	Case Qty	Nut Driver
	3/8"	8020957	SWG 10	1/4 x 1"	622 (Fir)	300	25	125	#14 SW Red Part # 8114910
	3/8"	8021957	SWG 20	1/4 x 2"	1725 (Fir)	1050	25	125	#14 SW Red Part # 8114910
	3/8"	8022925	SWG 25-380	3/8 x 2-1/2"	2249 (Fir)	1500	25	125	#14 SW Red Part # 8114910
	3/8"	8023925	SWG 30	1/4 x 3"	1884 (Fir)	1500	25	125	#14 SW Red Part # 8114910

SAMMYS SWIVEL HEAD™ FOR WOOD – Swivel Application



Max. Angle 89°

PRODUCT FEATURES

- Eliminates distortion of threaded rod
- Accommodates up to 3 1/2" x 12 pitch roof
- Saves time from traditional methods
- Reduces installation costs
- Assembled in the U.S.A.



View our installation videos:
www.sammysanchors.com/install



SWIVEL MOUNT

Approvals	Rod Size	Part Number	Model	Screw Description	Ultimate Pullout (lbs)	UL Test Load (lbs)	FM Test Load (lbs)	Max. Deflection	Box Qty	Case Qty	Nut Driver
	3/8"	8139957	SH-GST 20	1/4 x 2"	1257 (Fir)	1050	1475	17°	25	125	#14 Black Part # 8113910
	3/8"	8269957	SH-GST/CST 20	5/16 x 1-3/4"	1903 Dim. Lumber 1406 @ 45° off vertical Dim. Lumber	1500 850 @ 45°		89°	25	125	#14 SH Orange Part # 8273910

*May require pre-drilling; consult joist manufacturer / **Will not swivel until installed with black nut driver

To find a distributor near you, call 800-848-5611

WOOD & STEEL INSTALLATION

1. Install appropriate Sammy nut driver (as shown on box label) in a 3/8" or 1/2" portable drill and insert the anchor into the nut driver.
2. Position drill perpendicular to the structural member and begin drilling (**DO NOT USE IMPACT OR HAMMER MODE**).*
3. When the nut driver spins freely on the cap of the screw, stop drilling and remove. Installation is now complete.
 - DSTR and SWDR models add retainer nut and hand tighten (torque to 20 in-lbs max)

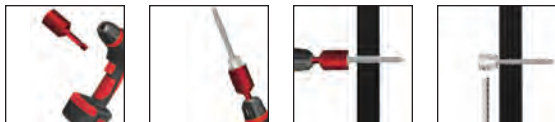
*For Sammys for Steel, use drill speeds as shown below:

SAMMYS FOR STEEL	SUGGESTED DRILL SPEED (RPM)
DSTR1-1/2, TEK 50, TEK 5.0, SDWR 1-1/2, SH-TEK 50	0 - 1800
All Other SAMMYS for Steel	0 - 2500

VERTICAL INSTALLATION



HORIZONTAL INSTALLATION



CONCRETE INSTALLATION

1. Using included 1/4" diameter carbide tip drill bit, predrill the concrete member to a depth of 2", with a hammer drill or rotary hammer set on hammer mode.
 - For faster concrete installation see available concrete installation kit (8122910)
2. Install appropriate Sammy nut driver (as shown on box label) in a 3/8" or 1/2" portable drill and insert the anchor into the nut driver.
3. Position drill perpendicular to the structural member and begin drilling (**DO NOT USE IMPACT OR HAMMER MODE**).
4. When the nut driver spins freely on the cap of the screw, stop drilling and remove. Installation is now complete.

VERTICAL INSTALLATION



HORIZONTAL INSTALLATION



Note: SAMMYS nut drivers have a unique spin off feature which provides a fast and safe installation each time. When the face of the driver comes in contact with the material you are installing into, continue drilling until nut driver spins free. Installation is then complete. Warranty is void if other tools (or modified nut drivers) are used for installation.

Eye protection should be worn at all times when installing this product

SAMMY X-PRESS INSTALLATION

Only install Sammy X-press with UXPIT tool (8194910)

1. Insert the UXPIT hex receiver into 3/8" or 1/2" portable drill and pull handle end of tool away from drill to expose 25/64" drill bit; set aside handle end of tool
2. Drill pilot hole through metal deck or purlin
3. Slide handle end of tool over drill bit until it connects to the receiver and insert Sammy X-press anchor into socket
4. Insert the Sammy X-Press anchor through the pre-drilled hole
5. While holding onto tool handle, start the drill Sammy X-press anchor until it spins freely

For structural concrete over metal deck, follow steps above *before* pouring concrete

For non-structural lightweight concrete applied over metal deck not for use with air dry density greater than 35 PCF, follow steps above after the lightweight concrete has been applied

ITW CCNA Terms and Conditions

Visit www.itwccna.com for terms and conditions