

# data sheet



## THREADED WELDED OUTLETS (IMPORT)

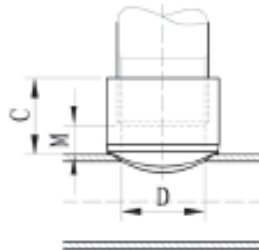
Weld O-Lets provide an economic and fast branch outlet solution for pipe fabricators. They are designed to fit a range of header sizes which will reduce costs associated with ordering, inventory and installation.

Type A with chamfer is designed for both manual and automatic weld operation.

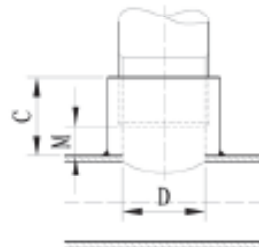
Material: ASTM A105/A106, available with SCH40 SMLS pipe or forged steel

Rated Working Pressure (R.W.P.): 3.5MPa/35bars/500psi

Surface Finish: delivered with Anti-Corrosion Liquid



Style 035A  
Weld O-Let (T)  
with chamfer



Style 035B  
Weld O-Let (T)  
without chamfer



Size		Pipe O.D.	Main Run Size		Dimensions			Approx. Weight
In.	DN	mm	In.	DN	C mm	D mm	T mm	kg
1/2"	15	21.3	1"-1 1/2"	25-40	25	18	12	0.10
1/2"	15	21.3	2"-2 1/2"	50-65	25	18	12	0.10
1/2"	15	21.3	3"-8"	80-200	25	18	12	0.10
3/4"	20	26.9	1"-1 1/2"	25-40	25	23	11	0.10
3/4"	20	26.9	2"	50	25	23	11	0.10
3/4"	20	26.9	2 1/2"	65	25	23	11	0.10
3/4"	20	26.9	3"-5"	80-125	25	23	11	0.11
3/4"	20	26.9	6"-8"	150-200	25	23	11	0.11
1"	25	33.7	1 1/2"-1 1/2"	32-40	28	29	11	0.11
1"	25	33.7	2"	50	28	29	11	0.11
1"	25	33.7	2 1/2"	65	28	29	11	0.11
1"	25	33.7	3"	80	28	29	11	0.11
1"	25	33.7	4"-5"	100-125	28	29	11	0.10
1"	25	33.7	6"-8"	150-200	28	29	11	0.10
1 1/2"	32	42.4	2"	50	32	38	13	0.16
1 1/2"	32	42.4	2 1/2"	65	32	38	13	0.15
1 1/2"	32	42.4	3"	80	32	38	13	0.15
1 1/2"	32	42.4	4"-5"	100-125	32	38	13	0.15
1 1/2"	32	42.4	6"-8"	150-200	32	38	13	0.15
1 1/2"	40	48.3	2"	50	32	44	13	0.26
1 1/2"	40	48.3	2 1/2"	65	32	44	13	0.25
1 1/2"	40	48.3	3"	80	32	44	13	0.25
1 1/2"	40	48.3	4"	100	32	44	13	0.26
1 1/2"	40	48.3	5"-6"	125-150	32	44	13	0.25
1 1/2"	40	48.3	6"	200	32	44	13	0.25
2"	50	60.3	2 1/2"	65	38	55	15	0.81
2"	50	60.3	3"	80	38	55	15	0.81
2"	50	60.3	4"	100	38	55	15	0.81
2"	50	60.3	5"	125	38	55	15	0.81
2"	50	60.3	6"	150	38	55	15	0.81
2"	50	60.3	8"	200	38	55	15	0.81
2 1/2"	65	73.0	3"	80	45	68	17	0.85
2 1/2"	65	73.0	4"	100	45	68	17	0.85
2 1/2"	65	73.0	5"	125	45	68	17	0.85
2 1/2"	65	73.0	6"	150	45	68	17	0.85
2 1/2"	65	73.0	8"	200	45	68	17	0.85
300	65	76.1	3"	80	45	71	17	0.85
300	65	76.1	4"	100	46	71	17	0.85
300	65	76.1	5"	125	45	71	17	0.85
300	65	76.1	6"	150	45	71	17	0.85
300	65	76.1	8"	200	45	71	17	0.85

The information contained herein is produced in good faith and is believed to be reliable but is for guidance only. ARGCO and its agents cannot assume liability or responsibility for results obtained in the use of its product by persons whose methods are outside or beyond our control. It is the user's responsibility to determine the suitability of any of the products, methods of use, or preparation prior to use, mentioned in our literature. It is the user's responsibility to observe and adapt such precautions as may be advisable for the protection of personnel and property in the handling and use of any of our products.

FOR MORE INFORMATION CALL ARGCO AT 800-854-1015 OR LOG ONTO ARGCO.COM