

# BUTTERFLY VALVE WAFER STYLE



## Ductile Iron Butterfly Valve, Wafer

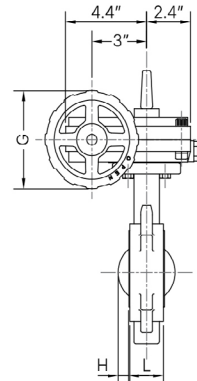
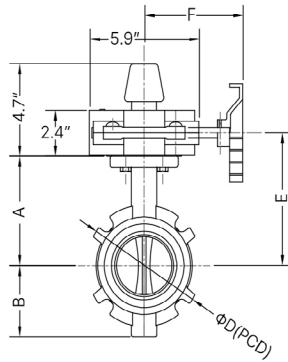


### Technical Features

- **Connections:** Wafer Type (ANSI Class 125)
- **Sizes:** 2½", 3", 4", 6", 8"
- **Approvals:** UL, cUL, FM
- **Maximum Working Pressure:** 300PSI (Max. Test Pressure: 600PSI)
- **Application:** Indoor and Outdoor Use
- Double-Seal Disc; Resilient EPDM Coating
- Factory-Installed Double Supervisory Switch
- Wiring Diagram, Section 2.16



Components	Material	Specification
Body	Ductile Iron	ASTM A536 Nylon-11 Coated
Disc	Ductile Iron	ASTM A536 EPDM Encapsulated
Indicator	Ductile Iron	ASTM A536
Housing	Ductile Iron	ASTM A536
Handwheel	Ductile Iron	ASTM A536
Stem	Stainless Steel	AISI 420
Worm Shaft	Stainless Steel	AISI 410
Gear Segment	Brass	ASTM B584
Housing Gasket	EPDM	EPDM Grade E
O-Ring (All)	EPDM	EPDM Grade E



### Dimensions

Nominal Pipe Size	L		A		B		D		E		F		G		H		Weight lbs
	in	mm	in	mm	in	mm	in	mm	in	mm	in	mm	in	mm	in	mm	
2½"	1.8	46.0	5.4	136.0	3.4	87.0	5.9	149.4	6.5	166.0	5.3	135.0	5.0	128.0	0.3	8.2	20.50
3"	1.8	46.0	5.6	143.0	3.7	93.0	6.6	168.2	6.8	173.0	5.3	135.0	5.0	128.0	0.6	14.5	23.00
4"	2.0	52.0	6.1	156.0	4.3	109.0	7.9	200.2	7.3	186.0	5.3	135.0	5.0	128.0	0.9	22.7	26.00
6"	2.2	56.0	7.4	188.0	5.7	144.0	10.6	269.8	8.6	218.0	7.6	193.0	8.7	220.0	1.8	45.4	36.00
8"	2.3	58.0	8.7	222.0	6.5	166.0	13.0	330.2	9.9	252.0	7.6	193.0	8.7	220.0	2.7	69.1	46.00

System No.		Location		Spec Section		Paragraph	
Submitted By		Date		Approved		Date	