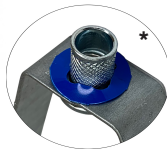


# ADJUSTABLE SWIVEL RING (LOOP/BAND) PIPE HANGERS



**SIZE:**

1/2" thru 8"

**FINISH:**

Electro-Galvanized

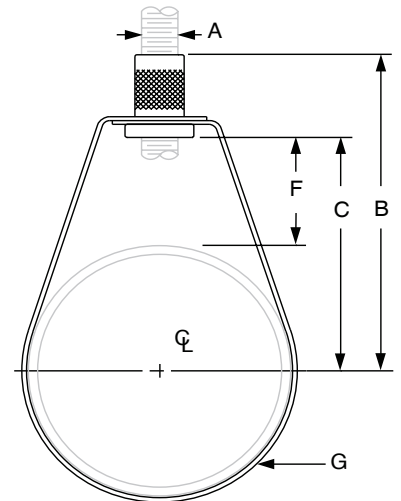
**FUNCTION:**

Recommended for the suspension of stationary non-insulated pipe lines

**FEATURES:**

- Rolled edge for easy install and pipe protection
- Complies with Federal Specification A-A-1192A (Type 10) and MSS SP-69 (Type 10)
- NFPA standards for reduced rod sizes for Electro Galvanized only
- A blue plastic washer to ensure that the loop hanger and insert nut stay together
- Insert nut can be removed if required

ITEM #	PIPE SIZE	A ROD SIZE	B	C	F	G WIDTH
2550008	1/2"	3/8"	2-7/16"	1-7/16"	1-1/16"	5/8"
2550009	3/4"	3/8"	2-11/16"	1-11/16"	1-1/8"	5/8"
2550010	1"	3/8"	2-13/16"	1-13/16"	1-1/8"	5/8"
2550011	1-1/4"	3/8"	2-7/8"	1-7/8"	1-1/16"	5/8"
2550012	1-1/2"	3/8"	3"	2"	1-1/16"	5/8"
2550013	2"	3/8"	3-3/16"	2-3/16"	1-1/16"	5/8"
2550014	2-1/2"	3/8"	4-9/16"	3-5/16"	1-7/8"	7/8"
2550015	3"	3/8"	5"	3-3/4"	2"	7/8"
2550016	4"	3/8"	6"	4-1/16"	2-3/8"	7/8"
2550017	5"	1/2"	6-1/2"	5-1/4"	2-7/16"	3/4"
2550018	6"	1/2"	7-3/4"	6-3/16"	2-7/8"	3/4"
2550019	8"	1/2"	9-5/16"	7-11/16"	3-3/8"	7/8"



System No.		Location	
Submitted By		Date	

Spec Section		Paragraph	
Approved		Date	