

# CLEVIS HANGERS



[CLICK HERE TO PURCHASE](#)



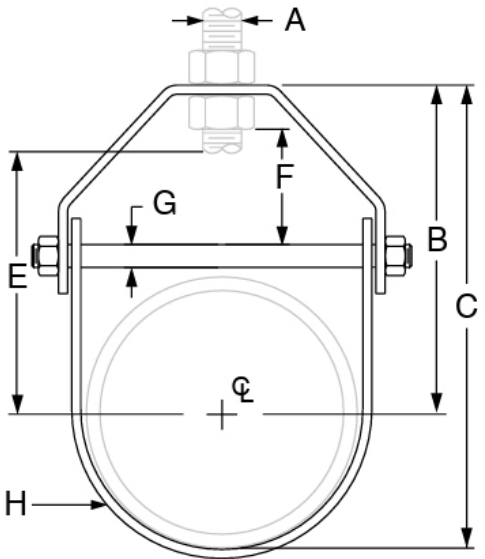
## Standard Clevis

For suspension of non-insulated stationary pipe lines

- Low carbon steel
- Finishes: Plain, Electro-Galvanized plated  
-- sound insulation available
- Conforms with Federal Specification WW-H-171 (Type 1),  
Manufacturers Standardization Society (MSS) SP-58 and SP-69 (Type 1)



2-1/2" thru 8" only



### CROSS REFERENCE

- NIBCO TOLCO®: 010-series
- ERICO®: 4010-series
- COOPER B-LINE®: B3100-series

ITEM #	PIPE SIZE	MAX LOAD	WEIGHT	A ROD SIZE	B	C	E ROD TAKEOUT	F ADJUSTMENT	G	H WIDTH LOWER
2550200-1/2	1/2	730	0.31	3/8	1-5/8	2-1/8	2-1/8	2-1/8	1/4	1
2550200-3/4	3/4	730	0.33	3/8	1 3/4	2-3/8	2-3/8	2-3/8	1/4	1
2550200-1	1	730	0.34	3/8	2-1/16	2 3/4	2 3/4	2 3/4	1/4	3/4
2550200-1 1/4	1 1/4	730	0.41	3/8	2-3/8	3-5/16	3-5/16	3-5/16	1/4	1
2550200-1 1/2	1 1/2	730	0.43	3/8	2-15/16	3-15/16	3-15/16	3-15/16	1/4	1
2550200-2	2	730	0.53	3/8	3 1/4	4 1/2	4 1/2	4 1/2	1/4	1
2550200-2 1/2	2 1/2	1350	0.74	1/2	3 3/4	5 1/4	5 1/4	5 1/4	3/8	1
2550200-3	3	1350	0.99	1/2	4-1/8	6	6	6	3/8	1
2550200-3 1/2	3 1/2	1350	0.91	1/2	4-7/16	6 1/2	6 1/2	6 1/2	3/8	1 1/4
2550200-4	4	1430	1.43	5/8	5-3/8	8-1/8	8-1/8	8-1/8	3/8	1 1/4
2550200-5	5	1430	1.62	5/8	6 -13/16	9 3/4	9 3/4	9 3/4	3/8	1-3/16
2550200-6	6	1940	3.26	3/4	8 1/4	10-1/8	10-1/8	10-1/8	1/2	1-7/16
2550200-8	8	2000	4.39	3/4	9 1/2	13	13	13	1/2	1-7/16
2550200-10	10	3600	8.64	7/8	10-7/8	16 1/2	16 1/2	16 1/2	5/8	1 3/4
2550200-12	12	3800	11.32	7/8	12	18	18	18	5/8	2
2550200-14	14	4200	15.05	1	14 1/2	21 3/4	21 3/4	21 3/4	3/4	2

System No.		Location		Spec Section		Paragraph	
Submitted By		Date		Approved		Date	